

vega® X7

High Definition system

HD system

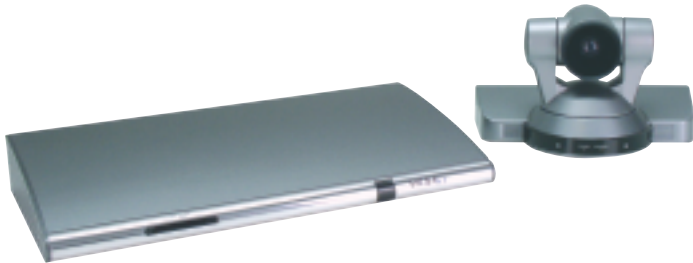
Fully featured split system with embedded HD inputs and outputs

Highest Quality

Crystal clear audio and superior video quality at 4 Mbps

Enhances Collaboration

Built-in MCU connects up to 9 sites with Continuous Presence and embedded PowerPoint® presentations



Vega® X7 is a high-performance system at the cutting-edge of set-top technology. It is ideal for medium and large-sized videoconferencing sessions that require HD audio and video quality.

Native HD system

HD is not just technology, it's a concept embracing Video, Voice and Content aiming at improving comprehension and productivity. Vega X7 is the Aethra solution specifically designed and projected for High Definition.

Supports multiple connectivity

Available in several versions: for connection up to 384 Kbps (768 kbps with optional XLNA) over ISDN BRI and 4 Mbps over IP.

Simultaneous Dual-Stream video

Convenient XGA inputs and outputs provide one-step PC plug-in for simultaneous dual-stream video and live PC presentation with enhanced images.

Easy to configure

Flexible, simple architecture enables easy re-configure of the system. Ready to upgrade simply by adding different cards.

Customizable Graphic User Interface

The user is able to choose layouts and colours from a variety of alternatives.

Supported Standards

- ITU-T H.320 ISDN
- ITU-T H.323 IP networks
- IETF-SIP (RFC3261) IP networks
- PPPoE
- Video H.261, H.263+, H.264
H.239, H.241
G.711, G.728, G.722,
G.722.1, G.722.1 Annex C,
MPEG4 AAC-LD
- Audio T.120
H.350
- MCU compatibility H.243, H.231

Transmission

- Bit rate 56 kbps ÷ 768 kbps over ISDN BRI (1)
56 kbps ÷ 2 Mbps over ISDN PRI (2)(**)
64 kbps ÷ 4 Mbps over IP (H323/SIP)
Asymmetric rates
56 kbps ÷ 2 Mbps over V.35/Leased (2)
- Simultaneous video motion coding and PC presentations from the XGA input
(1) Up to 384 kbps with sw option, up to 768 kbps with hw option external XLNA module
(2) With external XLNA module
(**)in North America ISDN PRI/T1 at 1544 kbps (ANSI T1 recommendations)

Video

- Frame rate 15 frames per second
@ 56 kbps -128 kbps
30 frames per second
@ 168 kbps - 4 Mbps
- Video resolution 720p 1280 x 720 pixels
4CIF 704 x 576 pixels
FCIF 352 x 288 pixels
QCIF 176 x 144 pixels
4CIF 704 x 576 pixels for still images (H.261 Annex D)
4SIF 704 x 480 pixels
SIF 352 x 240 pixels
QSIF 176 x 120 pixels
4SIF 704 x 480 pixels for still images (H.261 Annex D)
Up to 1024 x 768 pixels over XGA in H.263
- Remote camera control H.281 (H.320 - H.323)

Audio

- | Audio | Band | Bit rate |
|-----------------|---------------|---------------|
| G.711 | 300 ÷ 3400 Hz | 48/56/64 kbps |
| G.728 | 50 ÷ 3400 Hz | 16 kbps |
| G.722 | 50 ÷ 7000 Hz | 48/56/64 kbps |
| G.722.1 | 50 ÷ 7000 Hz | 24/32 kbps |
| G.722.1 Annex C | 50 ÷ 14000 Hz | 24/32/48 kbps |
| AAC-LD | 50 ÷ 14000 Hz | 48/56/64 kbps |
- Echo cancellation Full-duplex
 - Adaptive post filtering
 - Automatic Gain Control (AGC)
 - Automatic Noise Suppression

Hi-Band Digital Microphone Pod

- Range 360°
- Response 50 ÷ 14000 Hz
- Microphones 3
- Mute button
- Up to 2 pods in a daisy-chain configuration

External HD Camera

- Resolution 1280 x 720 pixels
- Presets 122 presets
- H. angle of view 8 to 70 degrees
- PAN ± 100°
- TILT ± 25°
- Zoom 10x (optical)

AETHRA® SpA

via Matteo Ricci, 10
60126 Ancona (Italy)
Telephone +39.071.218981
Fax +39.071.887077
Video 1 +39.071.2189704
Video 2 +39.071.2189701

Supported Monitor

- Format PAL, NTSC, HighDef
- Single, Dual monitor, HighDef
- PIP and PAP function
- 16:9
- Dual Monitor Emulation

Network Interfaces

- Basic version Ethernet
2-Port 10/100BASE-T full-duplex with integrated switch Ethernet 2 RJ-45
- Optional ISDN
3 BRI with integrated channel aggregator 3 RJ-45
- Network Module: IDC type connector to connect the Xline Network Adapter
- ISDN
6 BRI with integrated channel aggregator or 1 E1/T1 PRI with integrated channel aggregator or Leased networks
X.21/V.35/RS366/RS449 44 pin Hi/Den
or G.703 1 RJ-45

Network Protocols

- TELNET, HTTP, SNMP, DNS, DHCP, RTP/RTCP, TCP/UDP, ARP, STUN, SNTP

Network Features

- Differentiated Service (DIFFSERV), IP Precedence, IP Type of Service (ToS), Auto Gatekeeper Discovery, Clever Packets Management (AeCPM)

Firewall Traversal

- Auto NAT discover HTTP and STUN
- H.460.18 H.460.19
- "Keep Alive Packet" time configurable

Audio/Video Interfaces

- Video inputs
Aux In Composite (RCA)
Doc. Cam. 1 S-video (Mini-DIN)
Doc. Cam. 2 S-video (Mini-DIN)
Doc. Cam. 3 Composite (RCA)
XGA In DVI-I
2xHD HD-SDI
- Video outputs
Monitor 1 Composite (RCA)
S-video (Mini-DIN)
S-video (Mini-DIN)
Monitor 2 S-video (Mini-DIN)
with monitor detect
Aux Out Composite (RCA)
2xHD DVI-I
- Audio inputs
Connection Level Connector
1xPod mic. 360° Dig. RJ-11 6/6
Aux. mic. Mic Stereo jack 3.5 mm
Audio In Line RCA
Aux In Line 2 RCA (L/R)
- Audio outputs
Connection Level Connector
Monitor 1 Line 2 RCA (L/R)
Aux Out Line 2 RCA (L/R)

Auxiliary Interfaces

- Data RS232 Mini-DIN 8-pin with DB9 adapter
- Diagnostics RS232 Mini-DIN 8-pin
- VISCA RS232 Mini-DIN 8-pin supports Canon or Sony, aux PTZ camera
- PC card 1 PCMCIA, type II for Wi-Fi card

Beijing Hong Kong London Madrid
Mexico City Paris Miami São Paulo
Shanghai Shenzhen

Email: info.aethra@aethra.com
www.aethra.com

Closed Captioning/Text Chat

- T.140 text chat, available from Web

User Interface

- Multilingual on-screen graphic user interface
- User selectable languages:
Italian, English, French, Spanish, German, Portuguese, Norwegian, Swedish, Russian, Hungarian, Polish, Finnish, Simplified Chinese, Traditional Chinese, Japanese, Korean, Turkish, Czech
- Infrared remote control for full function control
- Contextual help
- Diagnostics and management functions
- Call progress monitoring
- Supports AMX™ or Crestron™
- Customizable Graphic User Interface
- Web streaming function: UNICAST and MULTICAST compatible with QuickTime™

Multipoint Function (option)

- Integrated MCU H.320, H.323 and SIP mixed mode
9 participants @ 256 kbps
6 participants @ 384 kbps
5 participants @ 512 kbps
4 participants @ 768 kbps
3 participants @ 1 Mbps
- Compatible with analog and mobile networks
- Video coding H.261, H.263+, H.264
G.711, G.722,
G.722.1, G.728
- Audio coding H.243
- Chair control H.243
- Dial-In/Dial-Out capabilities
- Continuous Presence
- Encryption
- H.239 Dual-video from any site

Security

- AES encryption standard H.233, H.234, H.235, H.235 Annex D
- NIST (National Institute of Standards & Technology) certified

Web Management

All the configuration, call, diagnostics and management functions are accessible using the following web browsers: Microsoft® Internet Explorer™, Netscape Navigator™

Remote Diagnostics and Management

	Local	Web Browser	SNMP
Self test	Yes	Yes	Yes
Diagnostics	Yes	Yes	Yes
Configuration	Yes	Yes	Yes
Call	Yes	Yes	
Error tracking	Yes	Yes	Yes

Integrated Presentation

- Supported applications Microsoft® PowerPoint®
- Multimedia support T.120

Power Supply

- 100-240 Vac 50-60 Hz 1.5 A Max

Dimensions

	Width	Height	Depth
• VEGA X7			
• Codec	6 cm (2.36")	6 cm (2.36")	23 cm (9.05")
• Camera	26 cm (10.23")	16 cm (6.3")	16 cm (6.3")